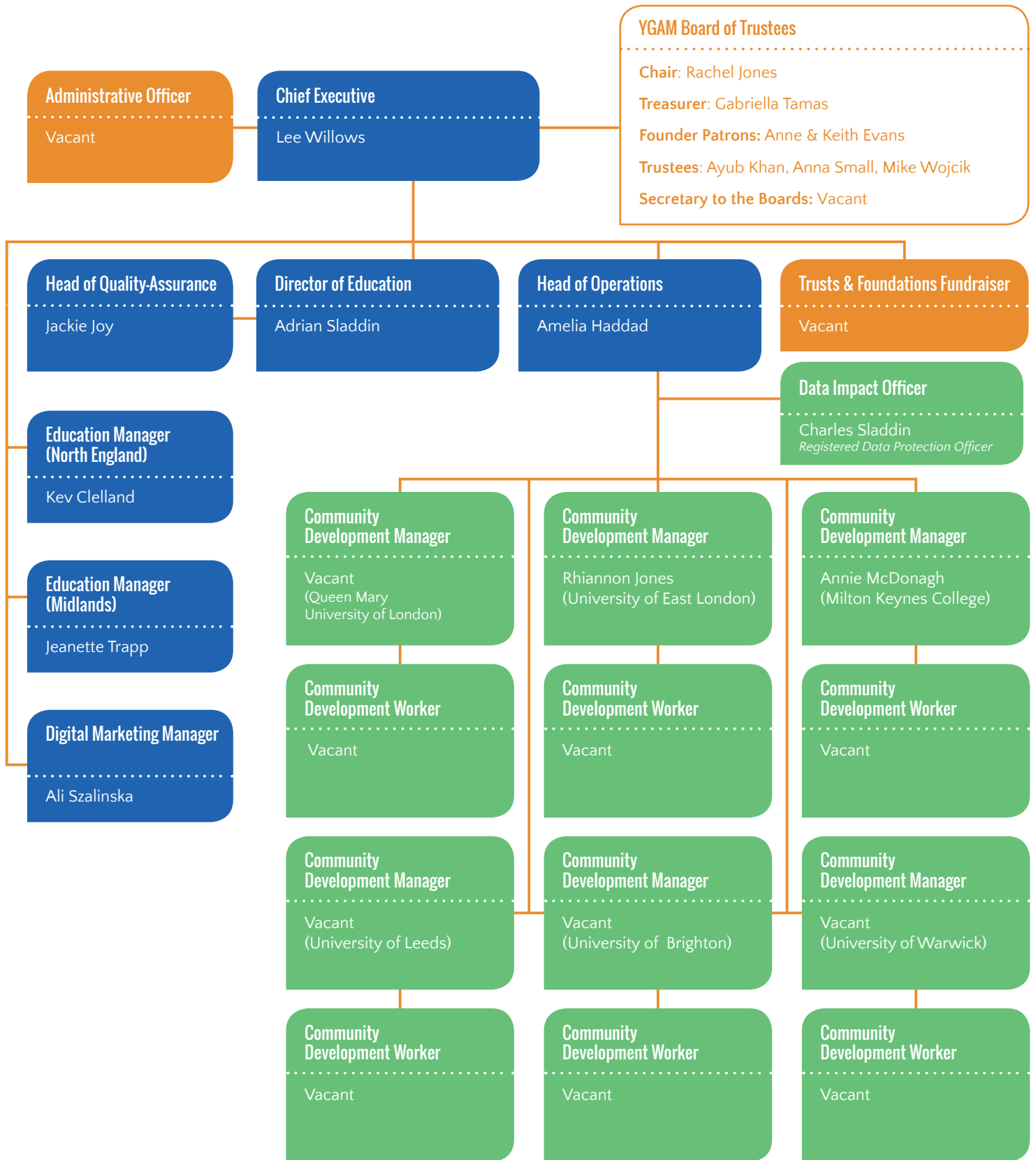


Organisational Structure - April 2018



Key

- Boxes shaded in green are funded.
- Boxes shaded in orange are unfunded.
- Boxes shaded in blue are part funded, part income generators.
- Funding will be sought for all unfunded posts and recruitment will not commence until funding is in place.

YGAM establishment chart as of 01 April 2018.

Next revision due by 01 June 2018.